



MILDMAY PARK, LONDON, N1

£2,500 PER ANNUM

Goldman Greg are delighted to present this bright and spacious furnished two bedroom apartment located on Mildmay Park, Islington N1.

The property comprises a large open plan reception area with a Juliet balcony, fully integrated kitchen, modern tiled bathroom, two double bedrooms and excellent storage throughout. The flat also comes with a private parking spot.

This is perfectly located just minutes to the amenities and transport of Newington Green and Dalston.

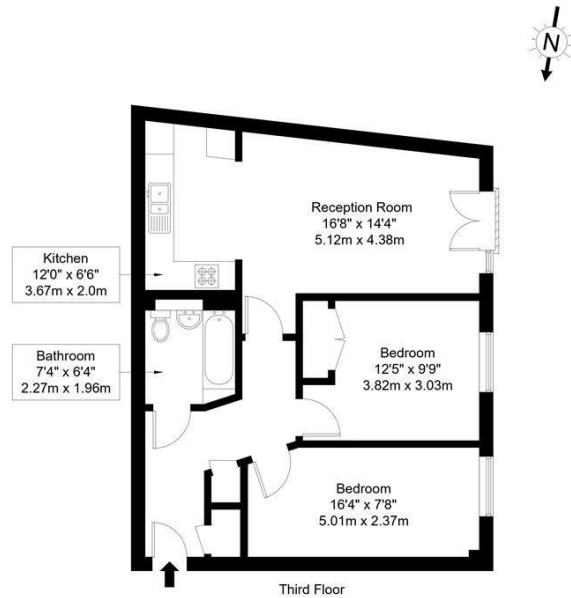
Available 30/05/2026 early viewings are highly recommended.



Goldman Greg

Mildmay Park, N1 4PE

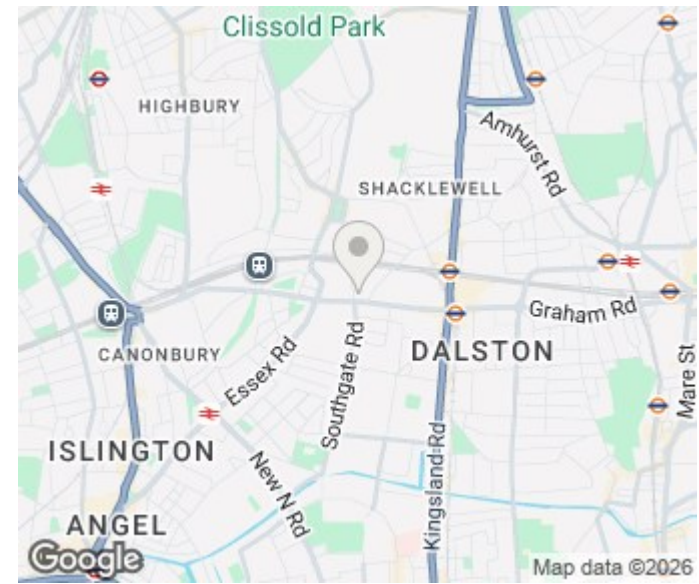
Approx Gross Internal Area = 65.38 sq m / 704 sq ft



Ref :

Copyright **BLEU PLAN**

The Floor plan is not to scale and measurements and areas shown are approximate and therefore should be used for illustrative purposes only. The plan has been prepared in accordance with the RICS code of Measuring Practice and whilst we have confidence in the information produced it must not be relied on. Maximum lengths and widths are represented on the floor plan. If there is any aspect of particular importance, you should carry out or commission your own inspection of the property.
Copyright @ BLEUPLAN



Energy Efficiency Rating		Current	Potential
Very energy efficient - lower running costs			
(92 plus) A			
(81-91) B			
(69-80) C		79	79
(55-68) D			
(39-54) E			
(21-38) F			
(1-20) G			
Not energy efficient - higher running costs			
England & Wales		EU Directive 2002/91/EC	

Agents Note: Whilst every care has been taken to prepare these particulars, they are for guidance purposes only. All measurements are approximate and are for general guidance purposes only and whilst every care has been taken to ensure their accuracy, they should not be relied upon and potential buyers/tenants are advised to recheck the measurements

Goldman Greg
143 Leman Street
London
E1 8EY

02079770018
leads@goldmangreg.co.uk
www.goldmangreg.co.uk

